

Teledyne Odom Hydrographic

# ECHOTRAC E20

## Hydrographic Echosounder for demanding 24/7 use



The new ECHOTRAC E20 is the result of more than 40 years of experience in precise echosounding and market leading sonar technology.

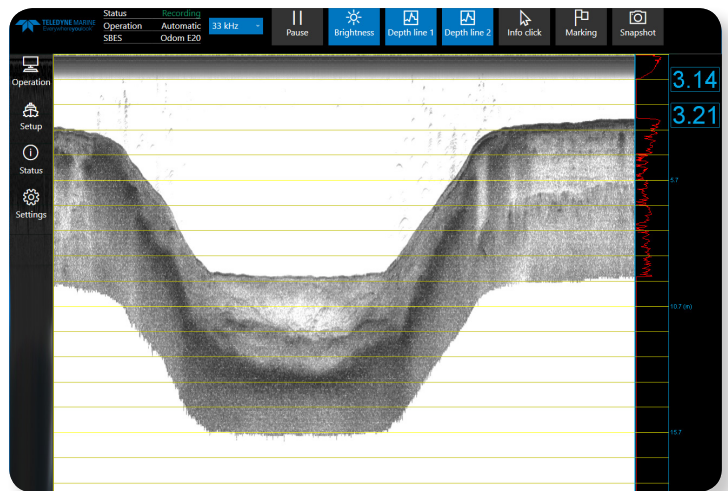
A portable, compact and robust echosounder designed for survey in all environments allowing you to maximize your utilization of the equipment and reducing your costs by having one unit for all applications.

Easy to use and fast to mobilize, the E20 allows you to begin your survey rapidly, delivering accurate results first time, every time. The E20 saves time and enables you to get results faster.

The ECHOTRAC E20 completes our portfolio of sonar solutions introducing yet another groundbreaking innovation into the day-to-day work life of our customers.

### E20 PRODUCT FEATURES

- 1 or 2 frequency agile channels from 10 to 250kHz
- 0.2 to 6,000 m depth range
- Ruggedized and shock-proof, water resistant IP67



### BENEFITS

- Precise and reliable survey data for shorter data processing time, enabling you to complete your project faster.
- Dual channel survey echosounder from very shallow to deep sea, from 10 kHz to 250 kHz – giving you the flexibility for all your survey projects, maximizing utilization of your investment.
- The compact system with minimal interfacing effort, allows for fast mobilization, and extremely low space to go anywhere, enabling you to start work immediately.
- Intuitive user interface, easy to use, so you can focus on the job at hand.
- The ECHOTRAC E20 is compatible with a broad range of transducers with straightforward transducer interfacing.



# ECHOTRAC E20



## TECHNICAL SPECIFICATIONS

<b>Operating frequency</b>	Frequency agile 10kHz to 250kHz 1 or 2 channels
<b>Resolution</b>	1cm
<b>Accuracy</b>	1cm +/-0.1% of depth at 200kHz 10cm +/-0.1% of depth at 33kHz 18cm +/-0.1% of depth at 12kHz
<b>Max ping rate</b>	50Hz
<b>Depth Range</b>	0.2m to 1,000m, 0.2m to 6,000m for ECHOTRAC E20-ER Extended Range depending on transducer and frequency
<b>Output power</b>	maximum 1kW maximum 2 to 3kW for ECHOTRAC E20-ER Extended Range values depend on transducer and operating frequency
<b>Input power</b>	10-30VDC, 90-260VAC
<b>Dimensions</b>	300 x 82.5 x 220 [W*H*D, all in mm] 5.8kg
<b>Interface</b>	3x serial interface (RS232) • Input: GPS position and time, heave, motion, heading • Output: depth 1x Ethernet LAN interface (full communication interface) 1x sync connector (with external trigger and sync pulse out)
<b>Environmental conditions and Ingress protection</b>	IEC 60945/EN 60068, EN 60529, IP67, CE

Stated accuracies and depth ranges are frequency and transducer dependant and can be impacted by among other auxiliary equipment, environmental conditions and vessel installation motion and motion, for more information contact Teledyne Marine.



PLD19162-1