

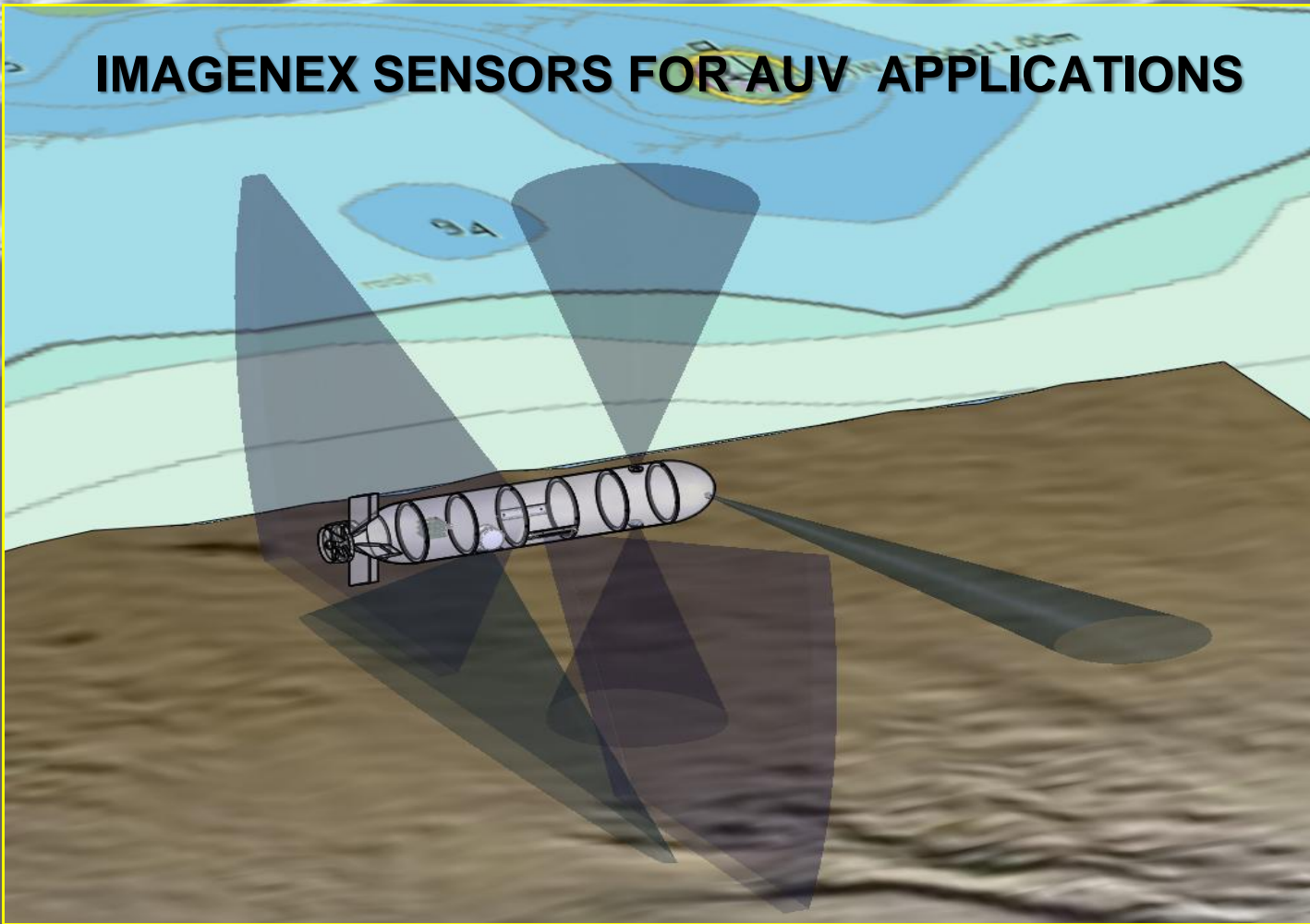
REDEFINING IMAGE CLARITY

IMAGENEX TECHNOLOGY CORP.

I
M
A
G
E
N
E
X



IMAGENEX SENSORS FOR AUV APPLICATIONS



- TOTAL POWER CONSUMPTION LESS THAN 20 WATTS
- ELECTRONIC BOARDS REQUIRE MINIMUM SPACE ALLOCATION
 - FROM 1.7 CUBIC INCHES TO 60 CUBIC INCHES
- COMMUNICATIONS: RS-485, RS-232, AND ETHERNET



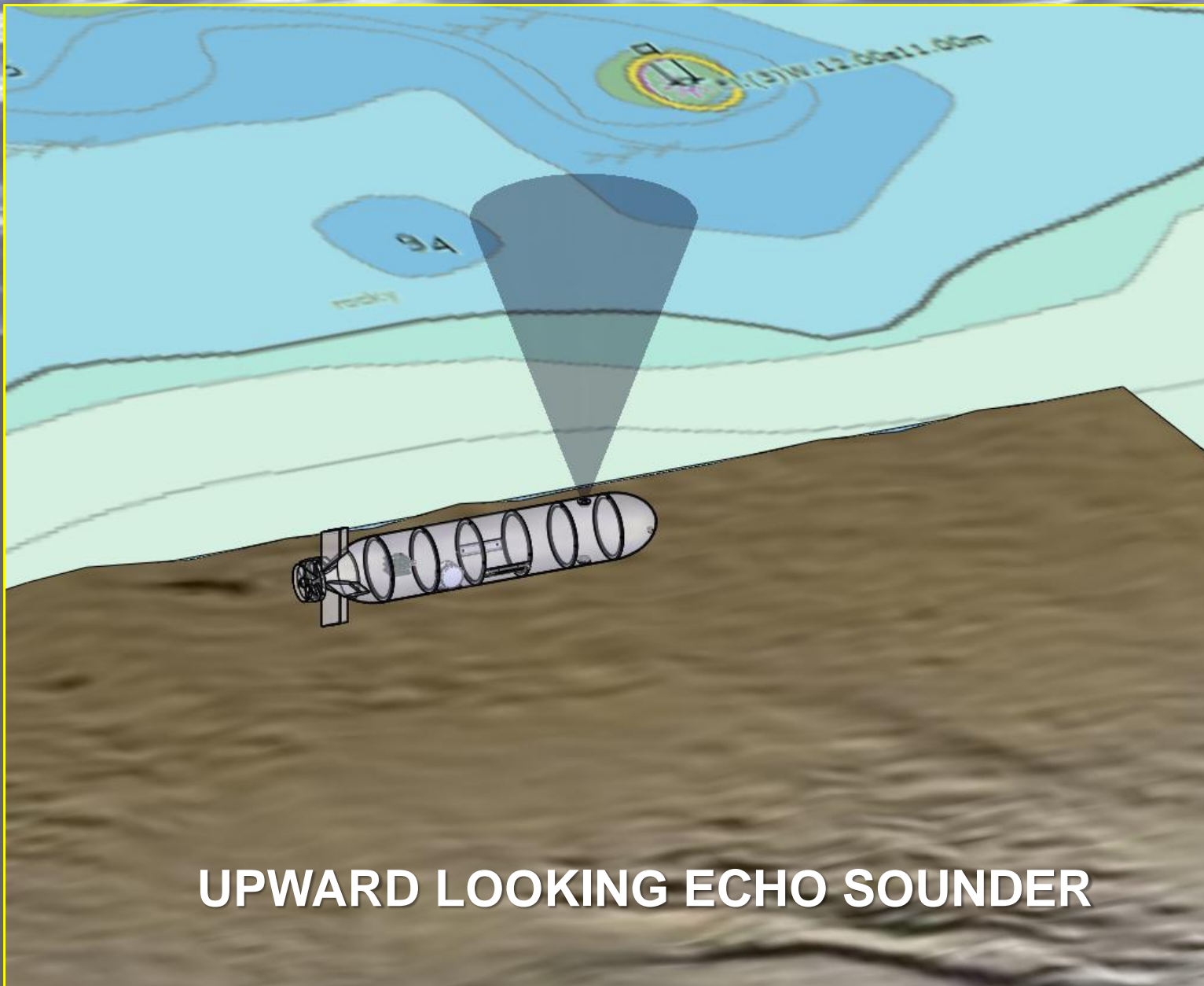


OBSTACLE AVOIDANCE SONAR

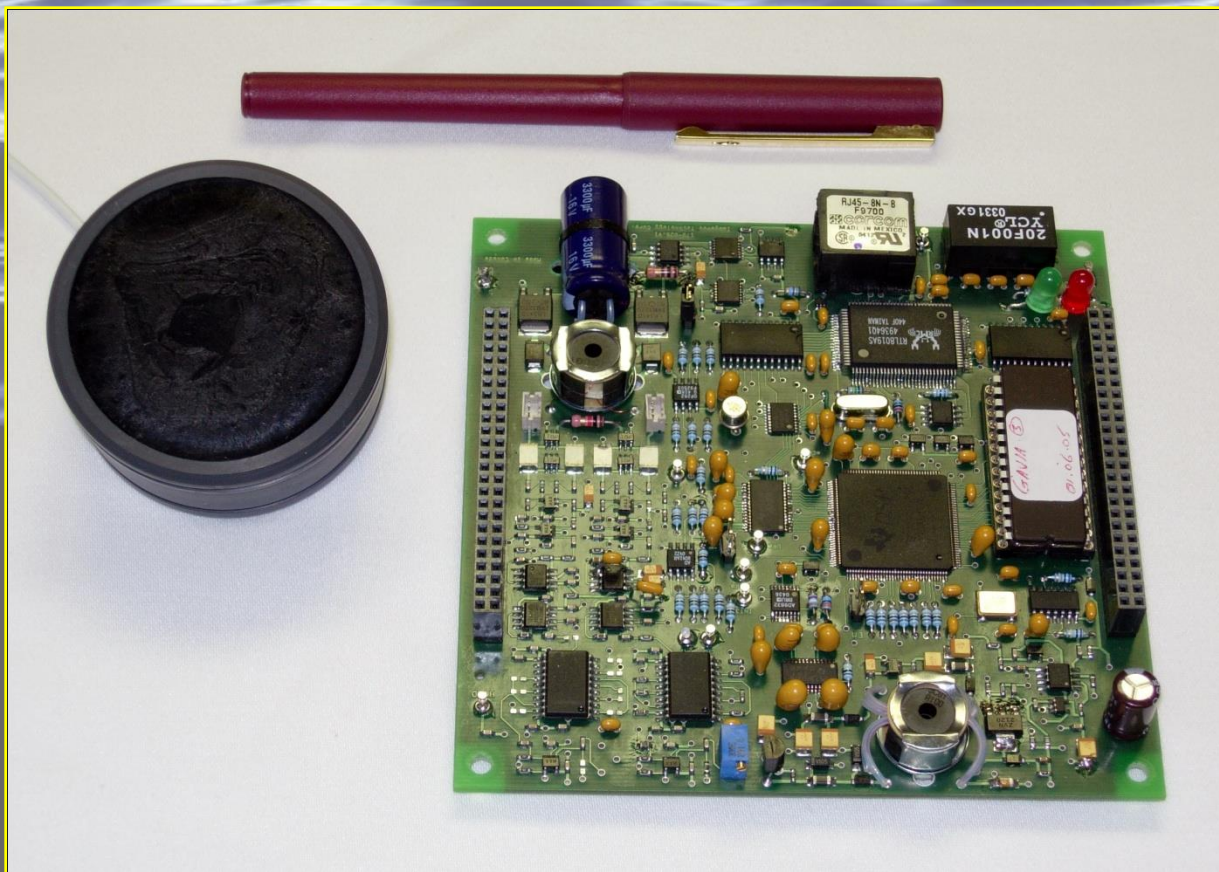
FREQUENCY: 675 kHz

MIN/MAX RANGE: 0.15m TO 50m

POWER: 22 – 30 VDC AT LESS THAN 1.5 WATTS



UPWARD LOOKING ECHO SOUNDER

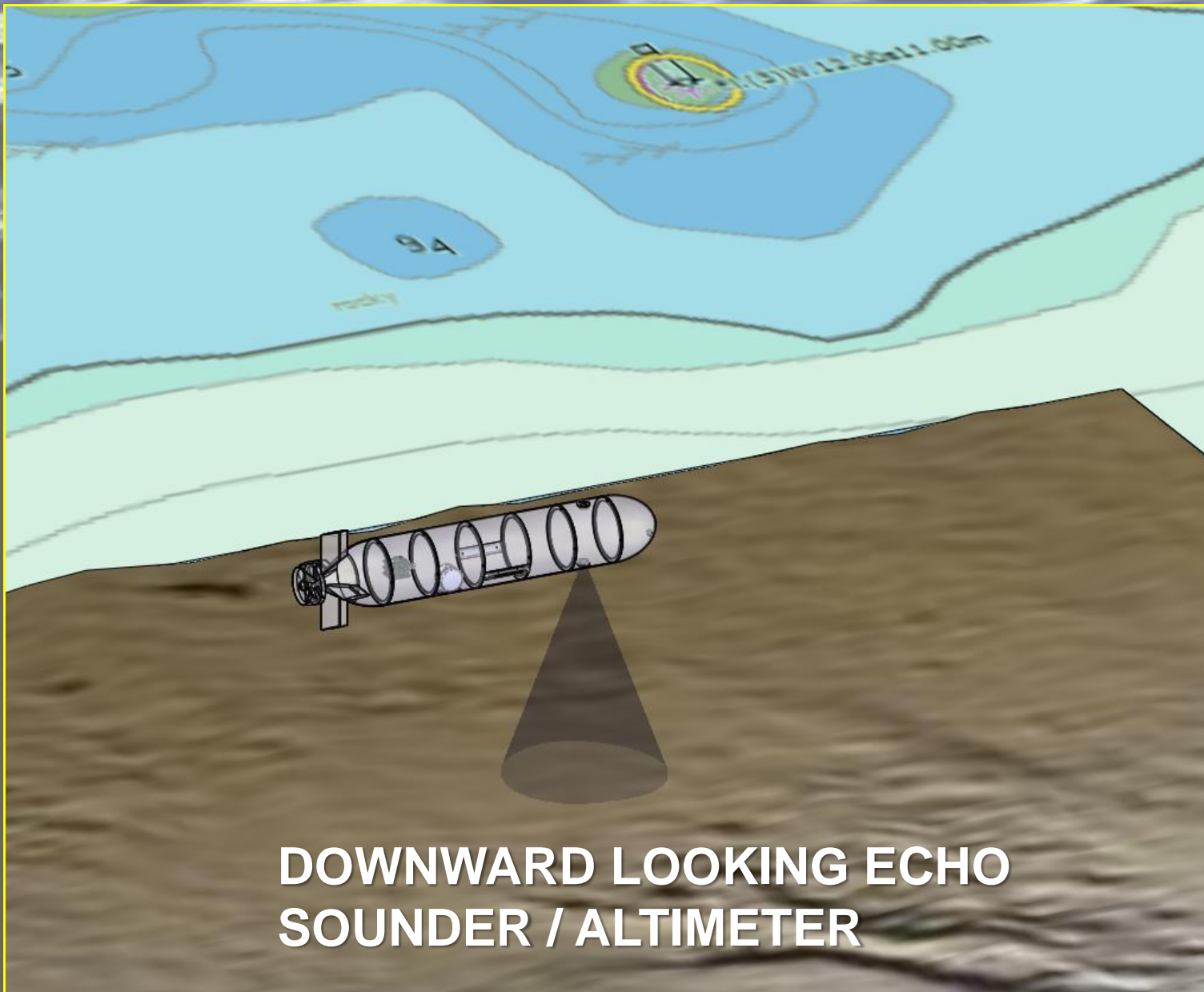


UPWARD LOOKING ECHO SOUNDER

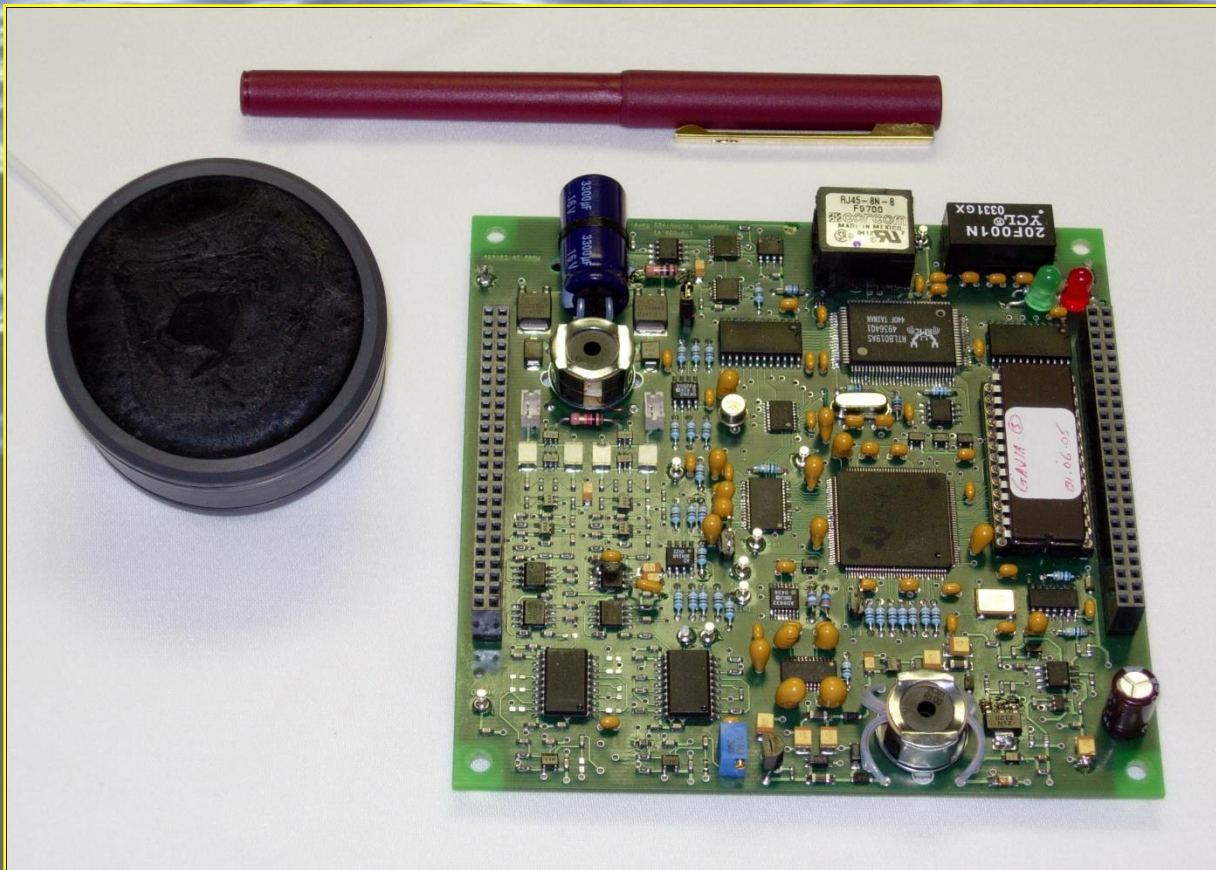
FREQUENCY: 120 kHz

MIN/MAX RANGE: 0.8m TO 300m

POWER: 22 – 33 VDC AT LESS THAN 2.5 WATTS



**DOWNWARD LOOKING ECHO
SOUNDER / ALTIMETER**

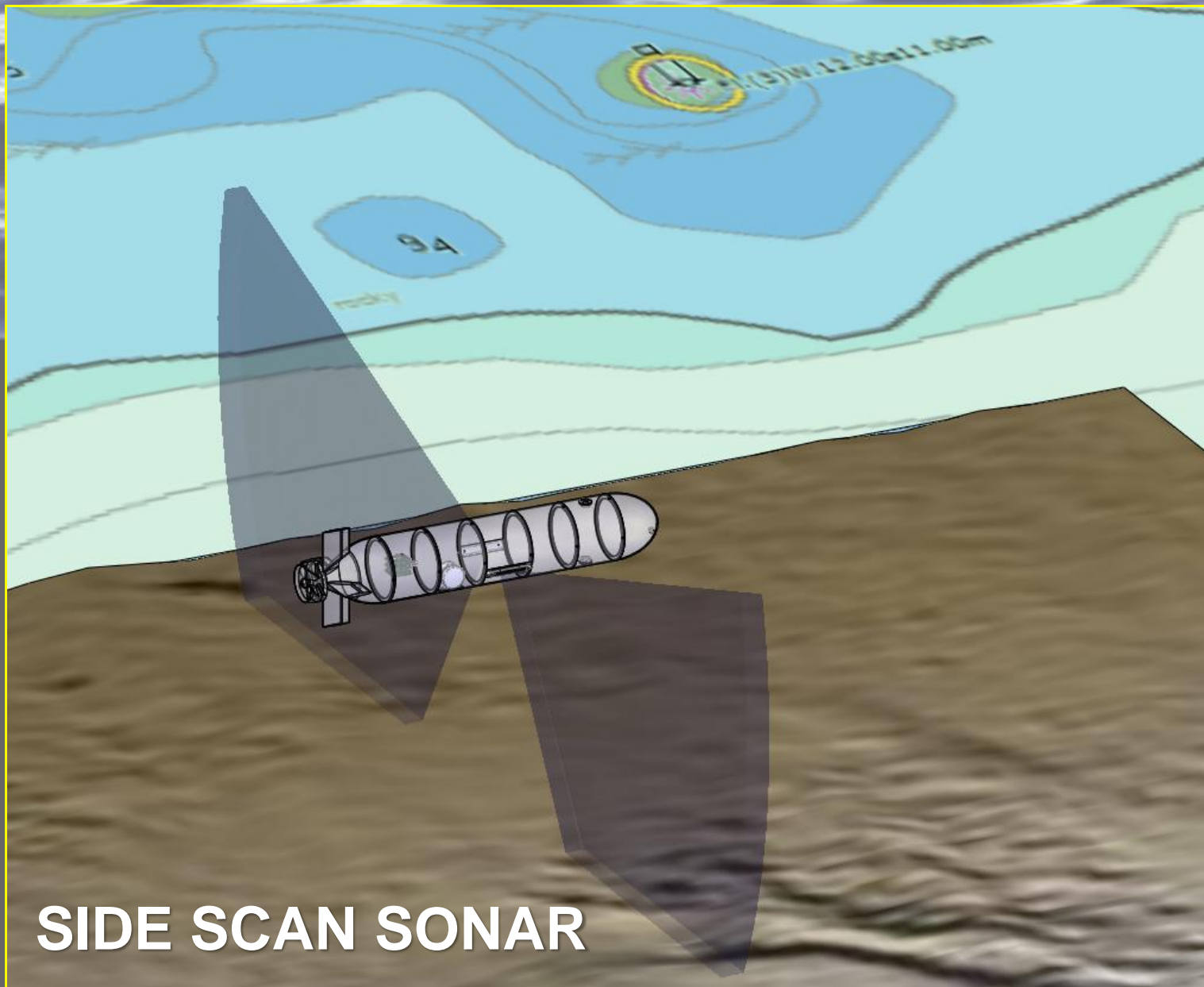


DOWNWARD LOOKING ECHO SOUNDER / ALTIMETER

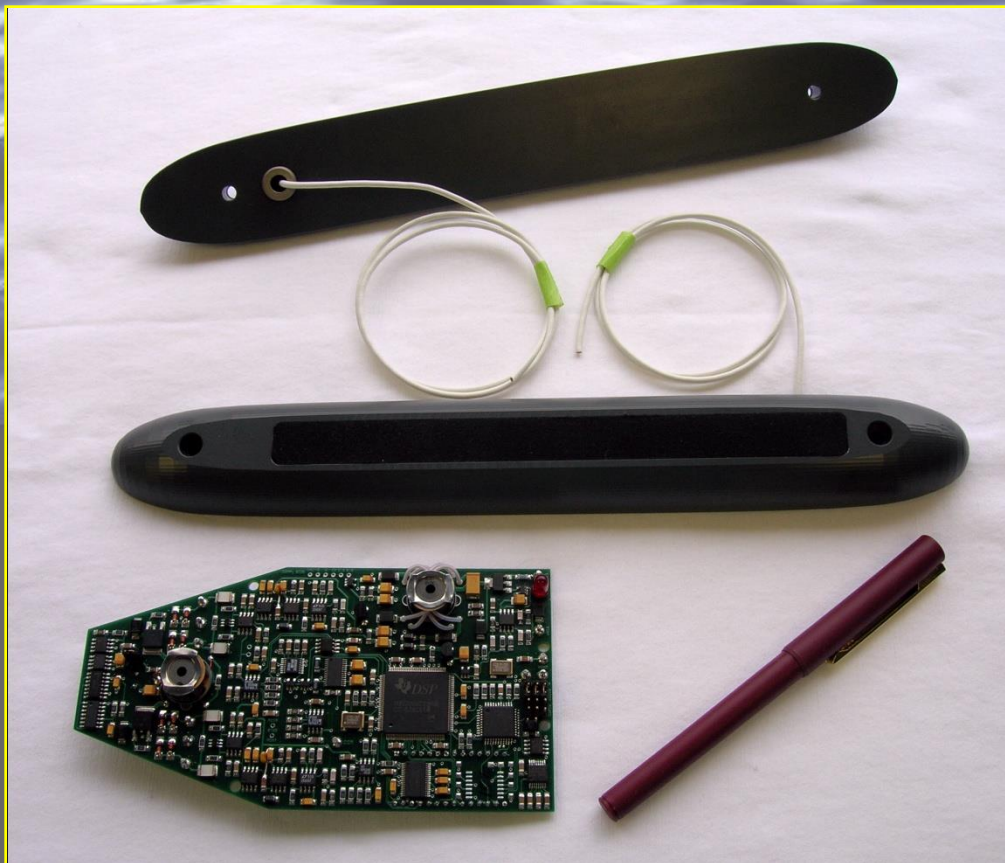
FREQUENCY: 120 kHz

MIN/MAX RANGE: 0.8m TO 300m

POWER: 22 – 33 VDC AT LESS THAN 2.5 WATTS



SIDE SCAN SONAR



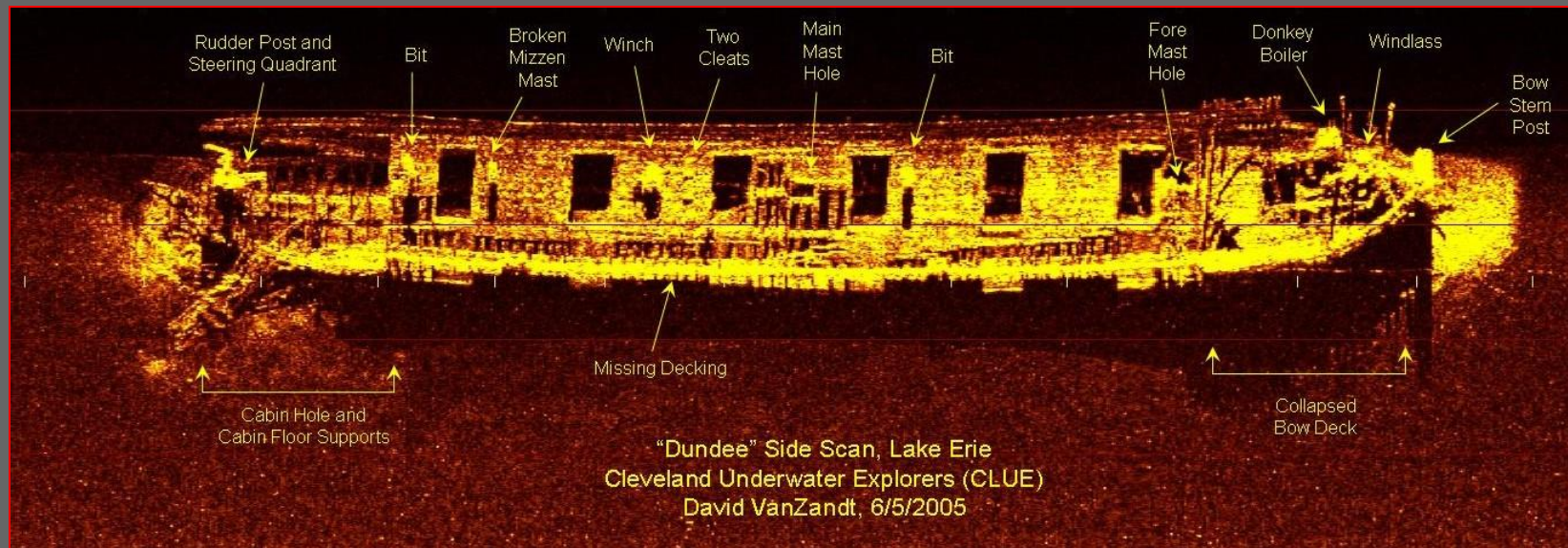
SIDE SCAN SONAR

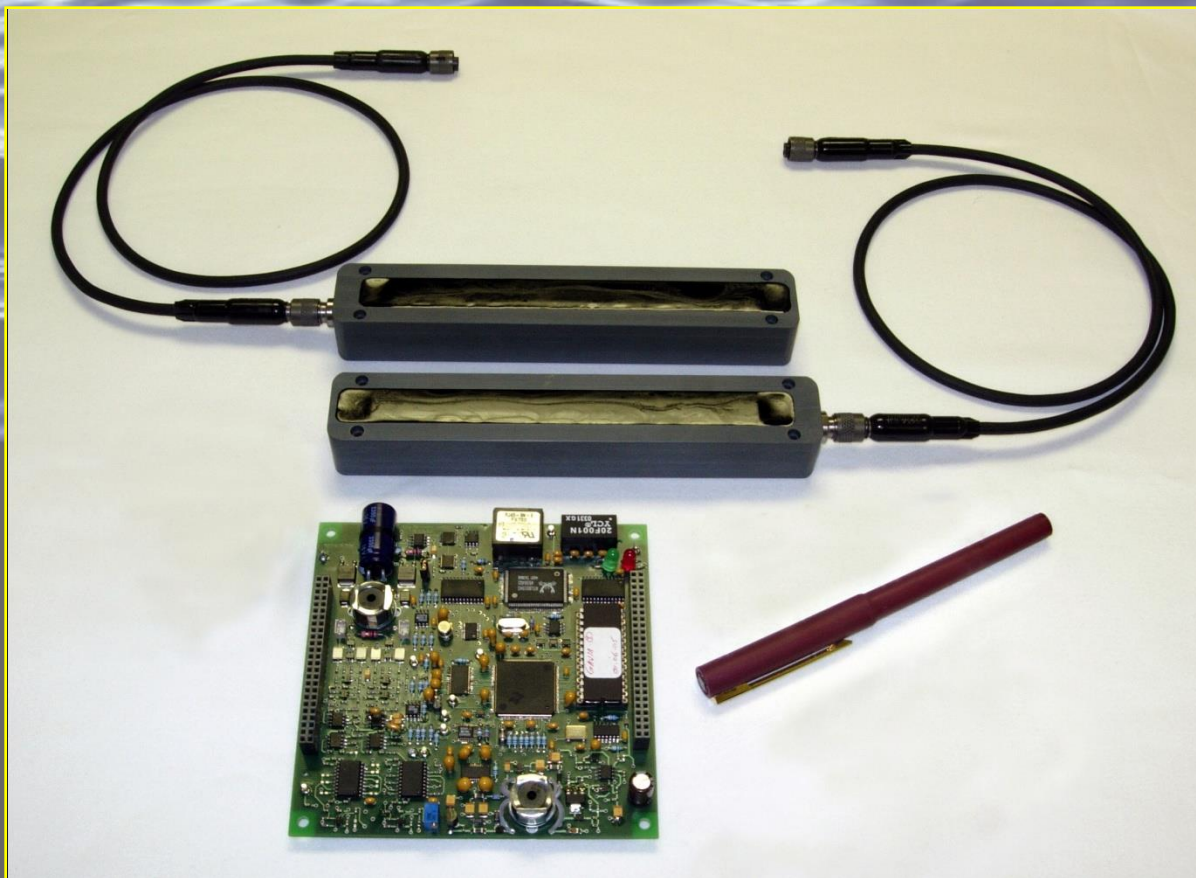
FREQUENCY: 260 / 800 kHz

RANGE SCALE: 15m TO 120m

POWER: 10 – 16 VDC AT LESS THAN 3 WATTS

SIDESCAN SONAR SAMPLE IMAGE



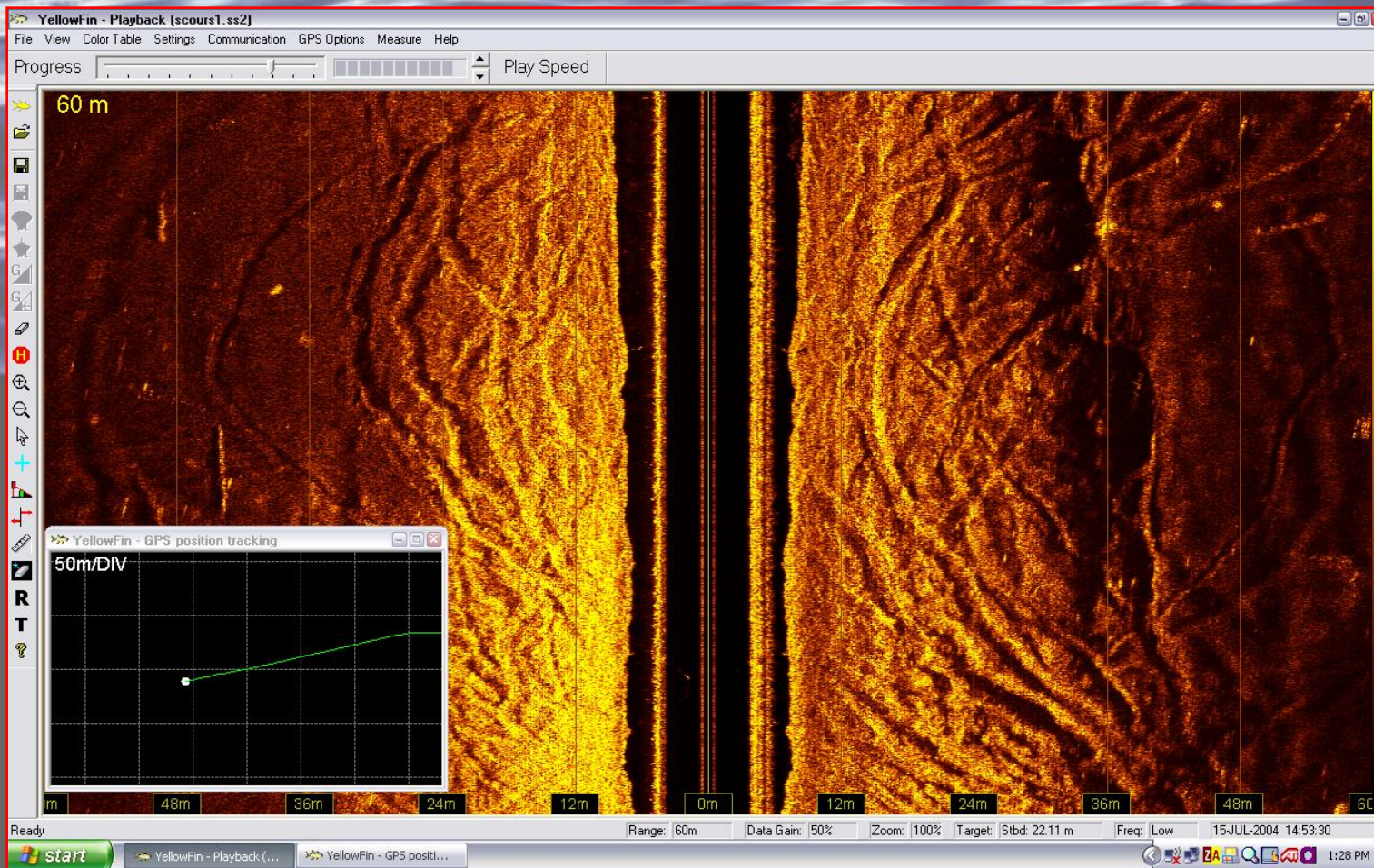


SIDE SCAN SONAR

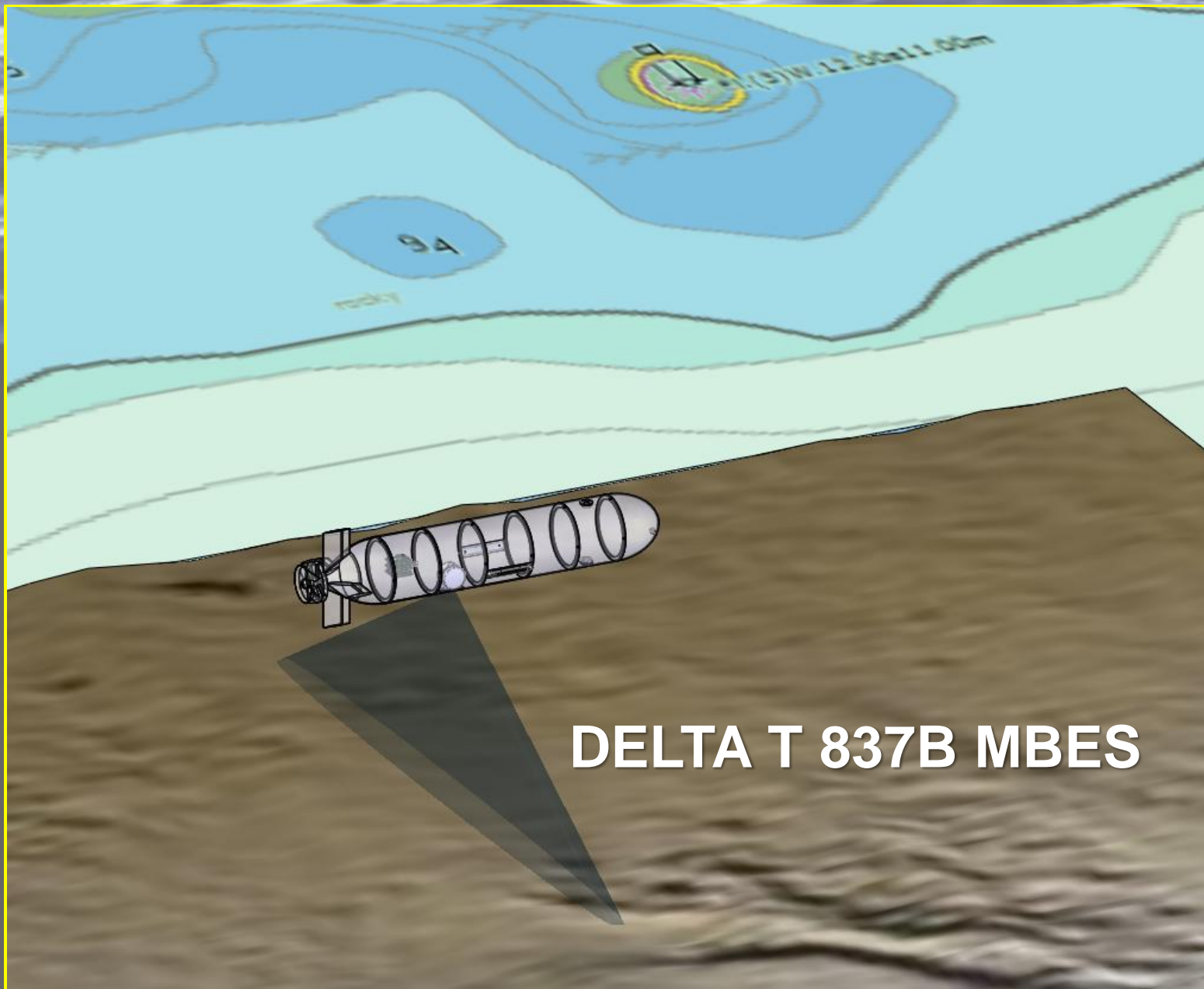
FREQUENCY: 260 / 800 kHz

RANGE SCALE: 10m TO 100m

POWER: 22 – 33 VDC AT LESS THAN 2.5 WATTS



**SIDE SCAN SONAR
SAMPLE IMAGE**





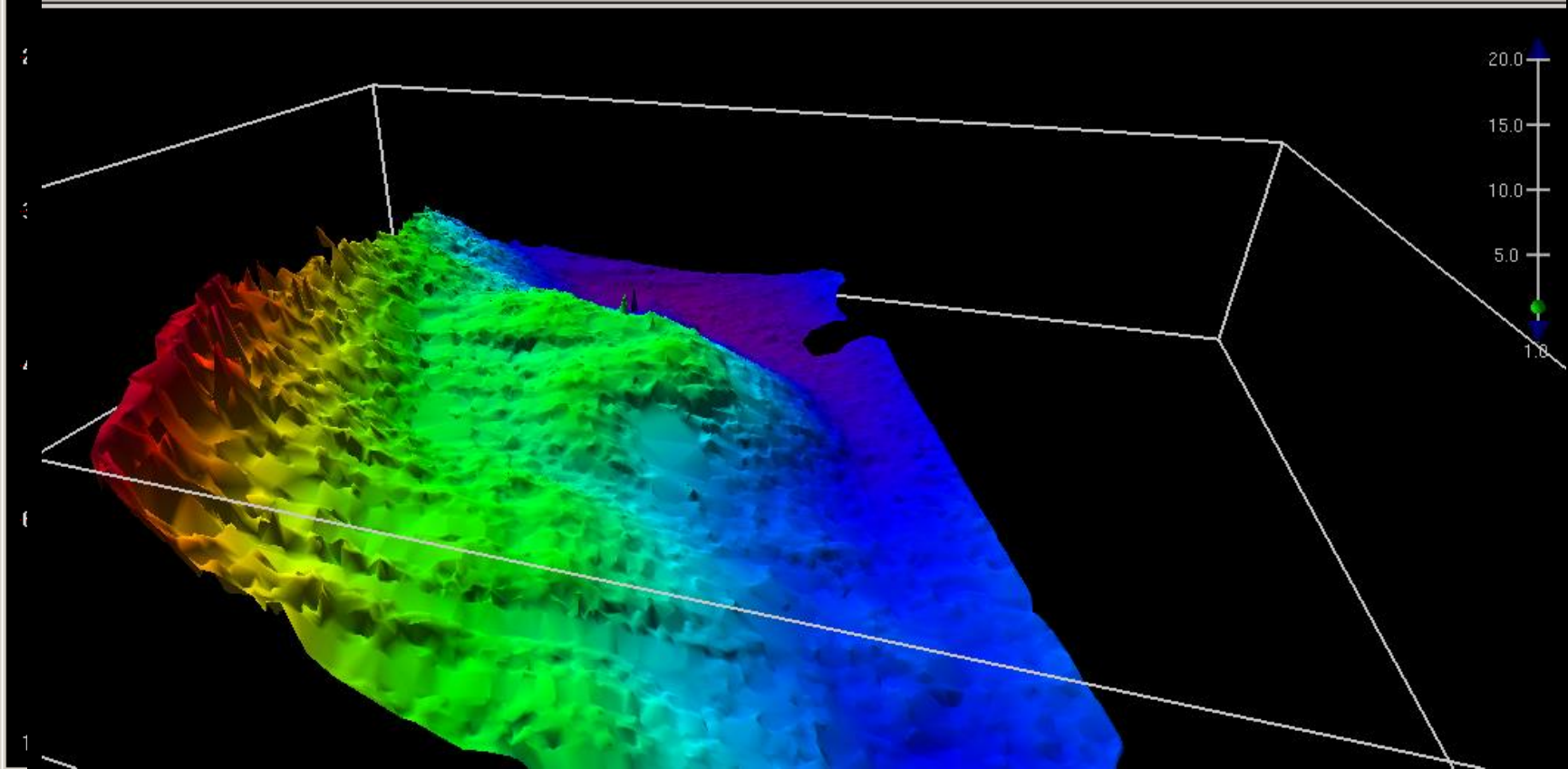
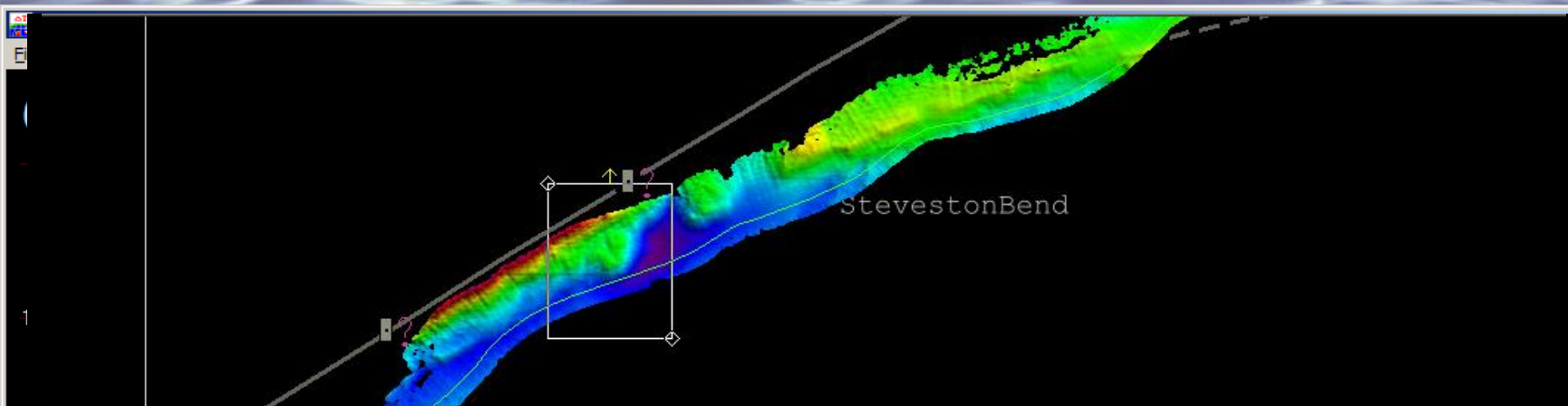
DELTA T (SWATH)

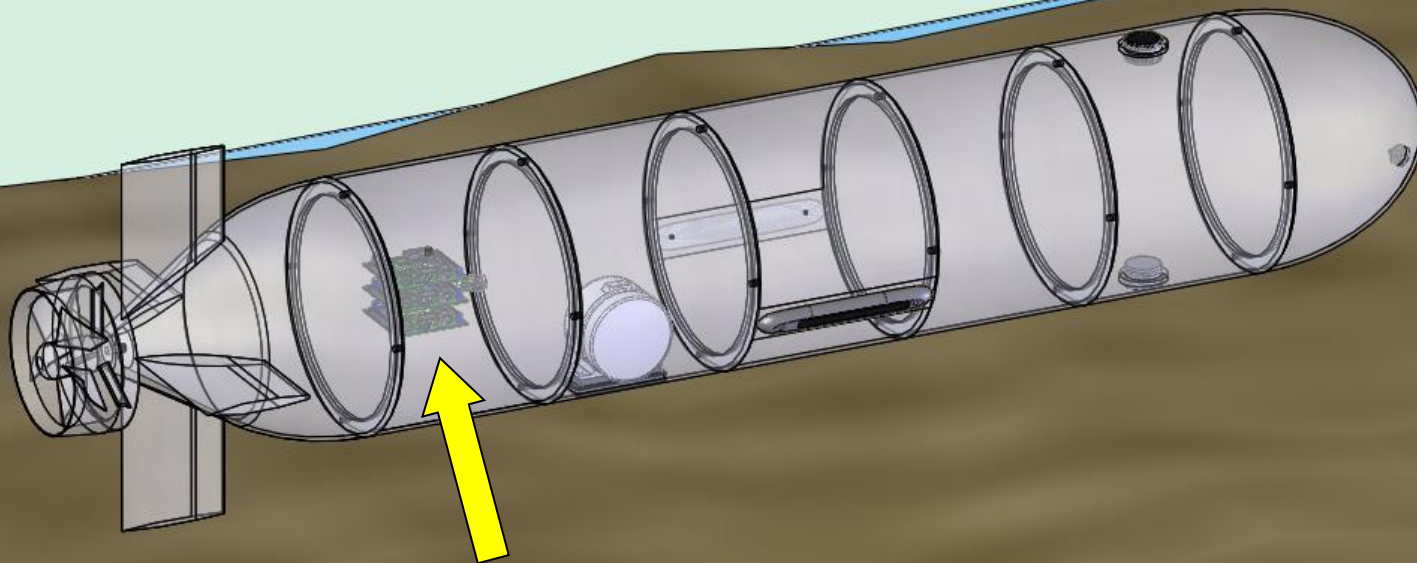
FREQUENCY: 260 kHz

MIN/MAX RANGE: 0.5m TO 100m

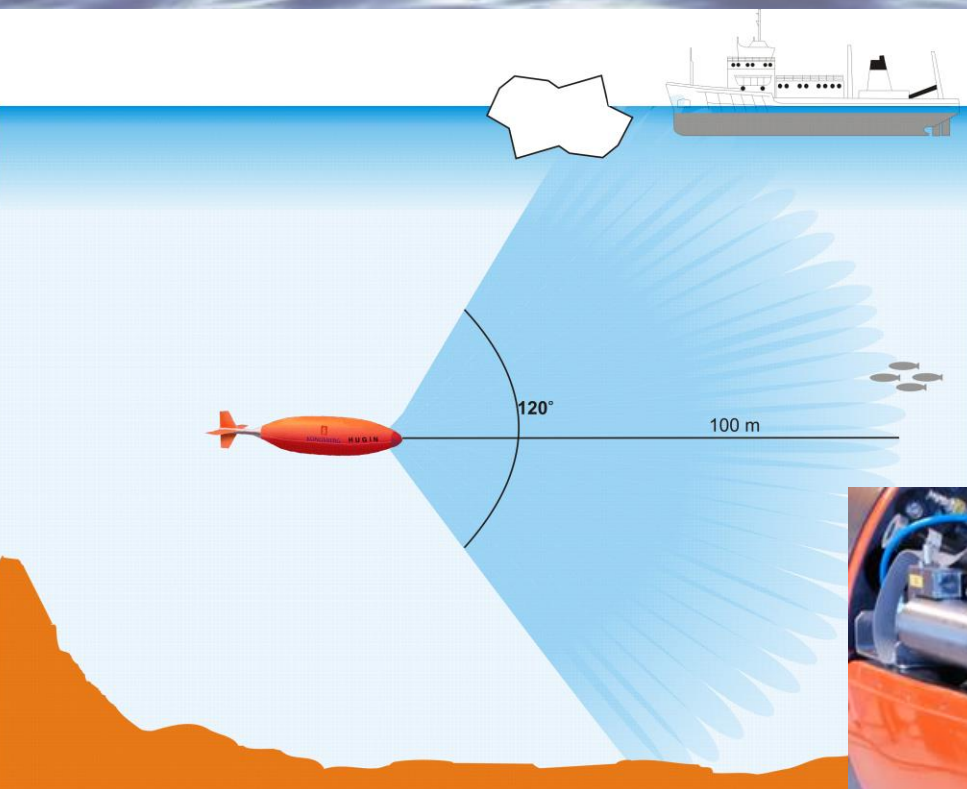
DEPTH RATED VERSIONS FROM 300-6000 M

POWER: 22 – 36 VDC AT LESS THAN 5 WATTS





SONAR DRIVER BOARDS



The HUGIN forward looking sonar (Delta T 837A) allows for improved bottom following and collision avoidance.
Improved autonomy in rough and unknown terrain
Improved data quality
Under ice capability
Ideal for low altitude camera operations

Imagenex Sonars

– Looking out for you

On this CD:

- **Specification Sheets**
- **Delta T Information**

For more information, please visit www.imagenex.com or contact

**Imagenex Technology Corp.
209-1875 Broadway Street
Port Coquitlam, BC
V3C 4Z1 Canada**

**Tel: (604) 944-8248 Fax: (604) 944-8249
e-mail: imagenex@shaw.ca**