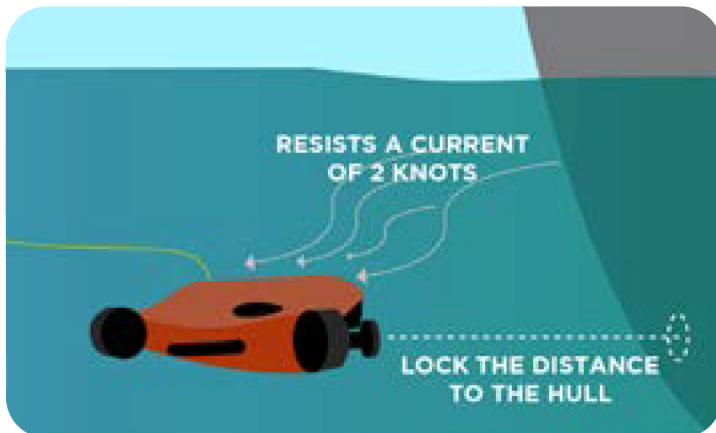


## SEASAM

## HULLSCAN™ DRONE

### THE FIRST ROV SPECIALIZED IN HULL INSPECTION

- **Seasam HullScan™** is the most specialized ROV for **hull inspections**.  
Faster than any of its competitors, its lateral speed is fast enough to counter currents of over **2 knots!**
- **HullScan™** housing has been streamlined for a maximum efficiency and hydrodynamic profile in any direction. Its 4 orientable outer propellers allow for **2 different speed/navigation profiles**, whilst retaining the industry-leading stability and manoeuvrability of Seasam Origin drone.



- Seasam HullScan comes with **new Smart Locks:**

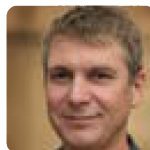
**Hull freeze** creates a visual lock of the drone in front of the ship hull with autonomous repositioning.

**Advanced hull servoing** enables a visual lock combined with automatic lateral gliding alongside the hull for semi-autonomous inspection.

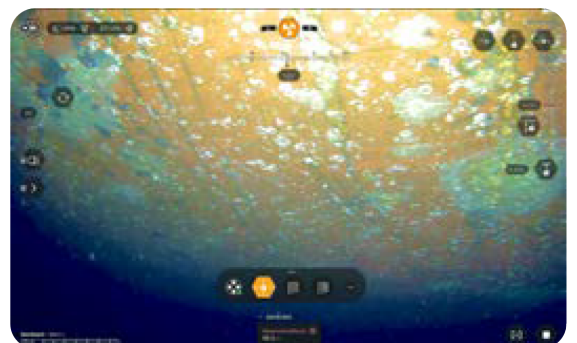
- Seasam Control™ pilot application is packed with **smart features to simplify ship inspection**.

### USER TESTIMONY

“ With Seasam HullScan, I was able to complete a full inspection of a 300-meter vessel at anchor with a 2-knot current and 40-centimeter visibility in less than two hours. The smart locks makes the job so much easier. ”



**John Mickras,**  
Ship inspector  
at Marina Inspect



## TECHNICAL SPECIFICATIONS

**SPEC SHEET**
**ROV CAPABILITIES**

<b>Dimensions</b>	54cm x 44cm x 24cm // 21in x 17in x 9.5in
<b>Buoyancy</b>	Slightly positive underwater - adjustable
<b>Weight</b>	9 kg / 20 lbs
<b>30° forward &amp; lateral speed</b>	2.1 kt / 1.5 kt // 1 m/s / 0.52 m/s
<b>60° forward &amp; lateral speed</b>	1.5 kt / 2.1 kt // 0.52 m/s / 1 m/s
<b>Maximum depth</b>	100 m / 330 ft
<b>Battery runtime</b>	1h30 - upgradable to 4hrs
<b>Tether length</b>	100m - upgradeable up to 200m
<b>Lighting</b>	Built-in LEDs 2 x 1000 Lumens - upgradeable
<b>Ancillary mounts</b>	Ball mounts / 2kg payload

**CAMERA**

<b>Sensor</b>	1/2.8" CMOS Sony IMX290 low light Sensor
<b>Video resolution</b>	Full HD 1080p - 30 fps - 80° inwater Field of View

**INTERNAL SENSORS**

Depth Sensor (m or ft) // Internal temperature // GPS // 9-Axis IMU

**SEASAM CONTROL APPLICATION**

<b>Navigation assistance</b>	Smart compass // depth - heading - pitch indicators // Locational map // System status indicators
<b>Survey features</b>	3 speeds - Turbo mode // Lateral gliding // Hull position widget (manual + auto) // POI flagging
<b>DVL</b>	<b>Wall servoing</b> , Distance min 30cm vs 1.2m for Seasam / Servoing available in yaw and pitch also vs only distance for Seasam // <b>Freeze feature</b> , stay at a specific position in front of the hull // <b>Deadreckoning</b> , the distance travelled along the hull.
<b>Other features</b>	Sensors data display // Speed and interface customisation // File sharing // Live streaming // Delair Cloud integration